

Clean air, fertile soil, reliable rainfall and freedom from many pests and diseases are ingredients for outstanding Tasmanian fruit production.

# FRUIT



**STRAWBERRIES**  
**Varieties:** Red Gauntlet, Seascape, Selva and Camarosa (Nov to Dec).  
Chandler, Pajaro, Selva, Seascape, Alinta, Euroka and Red Gauntlet (Oct to March).  
Kunawase, Toyonoka, and Hokawase (indoor grown from July to Dec).

**APRICOTS**  
**Varieties:** Moorpark, Goldrich, Rival, Hunter, Sundrop and Palstyn.

**PEARS**  
**Varieties:** Packhams Triumph, Beure Bosc, Winter Cole and Comice.

**CHERRIES**  
**Varieties:** Van, Lambert, Lapins, Simone, Merchant, Stella, Florence, Vega, Rainier, Sunburst, Sylvia, Regina, Sweetheart, Sir Don and Sir Tom.

**RASPBERRIES**  
**Varieties:** Chilcotin, Collins Defiant, Heritage, Willamette, Autumn Bliss, Chilliwack, Comox, Glen Moy and Tullameen.

**BLUEBERRIES**  
**Varieties:** Blue Ross, Brigitta Blue, Denise Blue, Elliot and Caroline Blue.

**APPLES**  
**Varieties:** Red Delicious, Hi Early, Golden Delicious, Red Fuji, Royal Gala, Braeburn, Jonagold and Pink Lady.

## Tasmania – Australia’s temperate island state

Separated from the rest of Australia by the waters of Bass Strait, Tasmania is also set apart by its climate. Air masses roll in consistently from the oceanic west, bringing some of the world’s cleanest air, along with rain that is pure enough to bottle and export. This reliable rainfall and climate contribute to Tasmanian farmers’ ability to produce consistent quality fruit.

## Superior climatic conditions

The islands of Tasmania, located between 40 and 43 degrees south result in a cool temperate climate and a relatively late ripening season. Average annual rainfall ranges from 300 to 1300mm in horticultural areas, ideal conditions for fruit production.

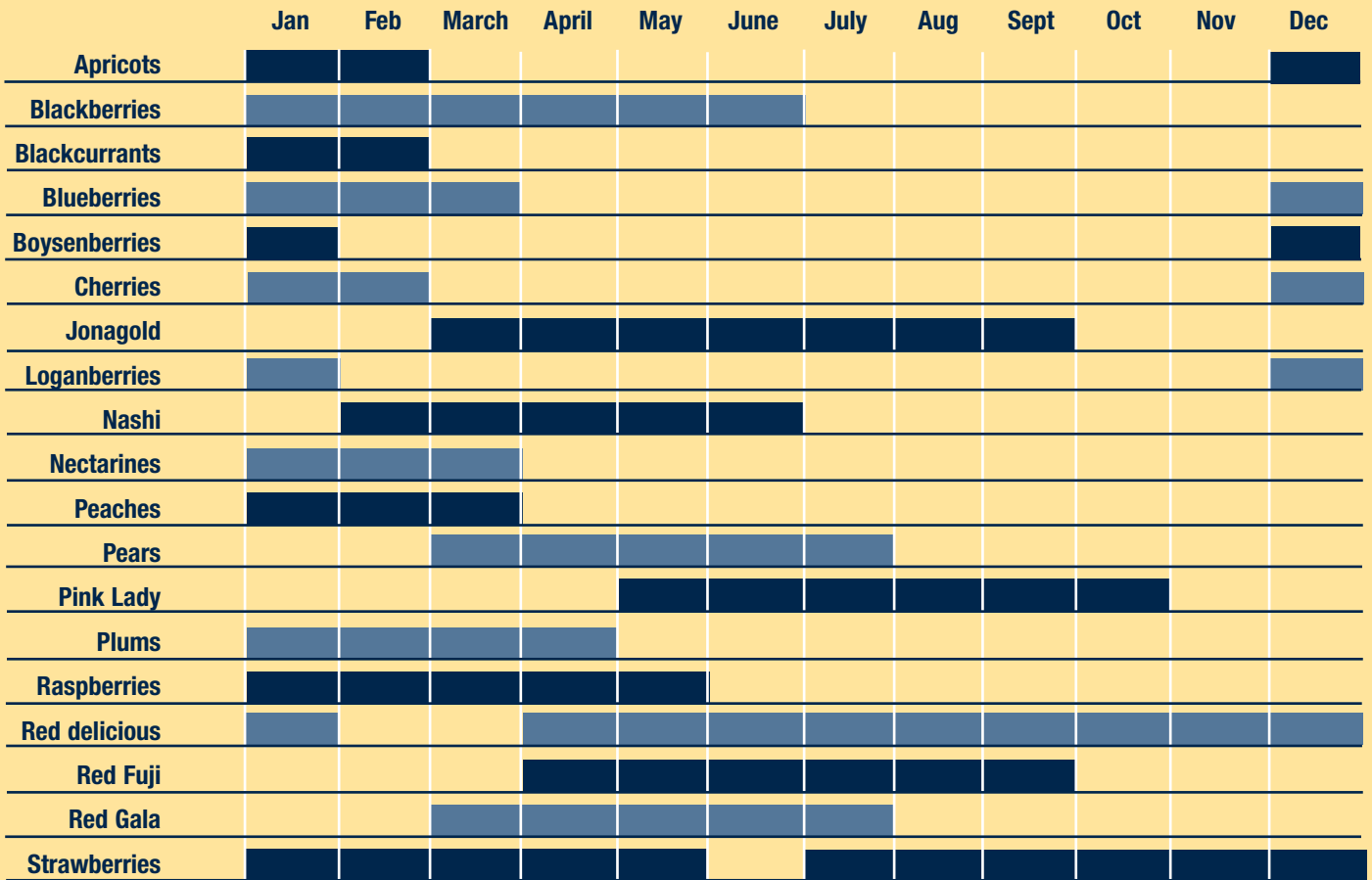
## Disease freedom

Tasmania has been formally recognised as free from fruit fly and a number of other pests and diseases. The quality of Tasmania’s temperate climate fruit and its low levels of chemical residues make it competitive with the world’s best. This status provides access to a variety of international markets.

## Seasonal advantages

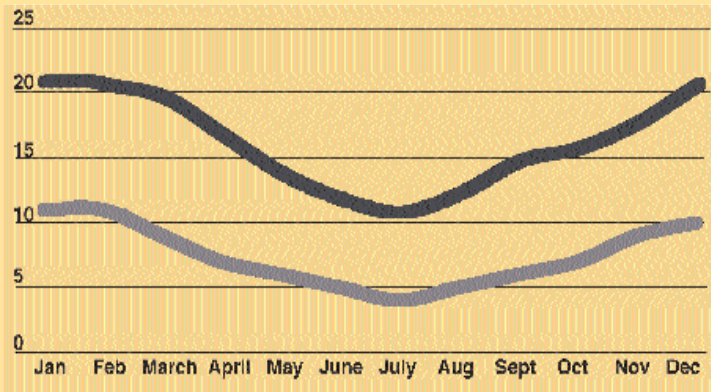
Tasmania’s seasonal advantage allows for high quality fresh fruit to be delivered to Northern Hemisphere markets when local fruit is not available.

# Seasonal availability



## Monthly Temperature Averages (°C)

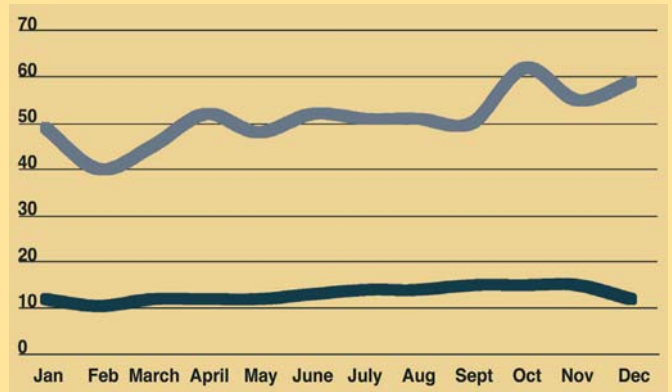
Hobart, Tasmania



■ Mean daily maximum temp. ■ Mean daily minimum temp

## Monthly Rainfall (mm)

Hobart, Tasmania



■ Number of rain days ■ Rainfall (mm)

Other fruits are available, but not necessarily in exportable quantities. Tasmanian fruit growers are always striving to expand the variety of fruits that can be supplied.

### For further information, contact:

Department of Economic Development

Head office: 22 Elizabeth Street.

Hobart, Tasmania, Australia 7000

Telephone: +61 3 6233 5888

Facsimile: +61 3 6233 5800

Email: [info@development.tas.gov.au](mailto:info@development.tas.gov.au)

Web: [www.development.tas.gov.au](http://www.development.tas.gov.au)

